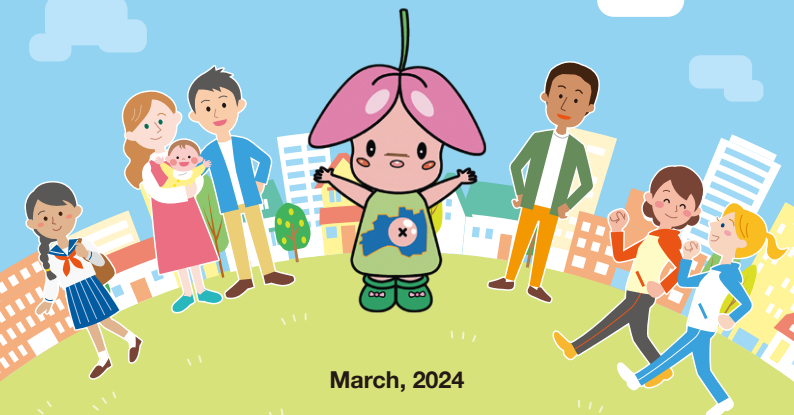




Handbook for International Residents

English Version




March, 2024

Motomiya City

Table of Contents

	List of Contact Information	1
1	Emergencies and Disasters	
	1-1 Emergency call	2
	1-2 If sick on a public holiday or at night	3
	1-3 Natural disasters that occur in Motomiya City	4
	1-4 Preparing for disasters	5
	1-5 Tips for when evacuating	6
2	Administrative Contacts and Consultations	
	2-1 Administrative contacts	7
	2-2 Consultations	8
3	Procedures Related to Daily Living	
	3-1 Hospitals	10
	3-2 Garbage	12
	3-3 Transportation	14
	3-4 Postal services	17
4	Procedures Related to Children	
	4-1 Nursery school and kindergarten	18
	4-2 Elementary school and junior high school	20
5	Medical and Welfare Related Procedures	22
6	Other Information for International Residents	22
	Facilities in the City	23

 **Notation of supported languages** Services available in languages other than Japanese are marked with this symbol.

jpn Japanese	eng English	chi Chinese	kor Korean
vie Vietnamese	tai Thai	ind Indonesian	hin Hindi
mya Burmese	nep Nepali	mon Mongolian	rus Russian
ukr Ukrainian	por Portuguese	ita Italian	spa Spanish
ger German	fre French	tgl Tagalog	khm Khmer
may Malay	sin Sinhalese		

List of Contact Information

Location	Name of Division	Tel.	Coverage
1F City Hall	Taxation Division	0243-24-5345	Money (taxes) to be paid to the city, prefecture and country
	Citizens' Affairs Division	0243-24-5341	Resident registration, seal registration, My Number Card, national health insurance, pension, and late-stage elderly medical care insurance
	Social Affairs and Environment Division	0243-24-5362	Garbage and transportation (buses)
	Disaster Prevention Measures Division	0243-24-5365	Disasters and Motomiya City Disaster Prevention Radio
	Building and Housing Division	0243-24-5393	Municipally-managed housing
	Water and Sewerage Division	0243-24-5411	Water usage and charges
2F City Hall	Kindergartens, Nurseries and Schools Division	0243-24-5446	Procedures related to kindergarten, nursery school, elementary school and junior high school
	International Relations Division	0243-24-5303	Everyday living for international residents
2F Epoca	Social Welfare Division	0243-24-5371	Support for people with disabilities and those who need assistance with everyday living
	Child Welfare Division	0243-24-5375	Support and medical care for children
	Elderly Welfare Division	0243-24-5203	Long-term care insurance
	Public Health Division	(1) 0243-24-5112 (2) 0243-24-5152	(1) COVID-19 (2) Support for babies and children
Shirasawa General Branch Office		0243-44-2114	Administrative Procedures

If you do not know which division to contact, call Motomiya City Hall on ☎0243-33-1111.

1 Emergencies and Disasters

1-1 Emergency call

Emergency services (fire engines, ambulances and police) are free of charge.

Call only when you need help.

In the case of illness, injury or fire

Call 119. Tell the operator the following:

Illness or injury

- (1) "It's a medical emergency"
- (2) Location where help is needed
- (3) Your name and telephone number



Fire

- (1) "There's a fire"
- (2) Location where help is needed
- (3) Your name and telephone number



Supported languages



In the case of crime (such as theft and violence) or traffic accident

Call 110. There is a police station in Motomiya City. If you have any problems, contact the police.

Koriyama-kita Police Station, Motomiya Branch

- 📍 172-1 Motomiya Bansei, Motomiya-shi
- ☎ 0243-33-3110



Map

1-2 If sick on a public holiday or at night

Emergency medical facilities (hospitals) on holidays and at night

There are four hospitals in Motomiya City and Nihonmatsu City on duty on a rotating basis. Call the hospital before you visit. To find out which hospital is on duty on the day, visit their website via the QR code.



Website

(1) Tani Hospital

- 📍 149 Motomiya Minamimachiura, Motomiya-shi
- ☎ 0243-33-2721

(2) Masu Memorial Hospital

- 📍 100 Sumiyoshi, Nihonmatsu-shi
- ☎ 0243-22-3100

(3) Masu Hospital

- 📍 1-103 Motomachi, Nihonmatsu-shi
- ☎ 0243-22-2828

(4) Nihonmatsu Hospital

- 📍 1-553 Naritamachi, Nihonmatsu-shi
- ☎ 0243-23-1231



Map

Doctors on duty on Sundays

Hospitals in Motomiya City and Nihonmatsu City are on duty on a rotating basis. To find out which hospital is on duty on the day, visit the website via the QR code. Visit the hospital from 9:00 to 11:30 or from 14:00 to 16:30.



Website

For more information

Health Division,
Social Health and Welfare
Department on 2F at Epoca

☎ 0243-24-5112

1-3 Natural disasters that occur in Motomiya City

There are various types of natural disaster, and they can occur at any time. Earthquakes and typhoons occur in particular in Motomiya City.

Earthquake

An earthquake is the shaking of the ground. Japan is an earthquake-prone country. Earthquakes can destroy homes and buildings and cause fires.



Typhoon

Typhoons cause heavy rain and strong winds. They occur mostly from July to October. Heavy rainfall can cause rivers to rise and overflow (floods) or mountains and cliffs to collapse (landslides).



Disasters such as earthquakes and typhoons may disturb daily life.

- For example, (1) Cell phone connection may become unstable.
- (2) Electricity, gas, and water may be shut off.
 - (3) Houses and roads may be destroyed.
 - (4) Trains and buses may stop.
 - (5) It may become difficult to obtain foodstuff and commodities.

etc.

1-4 Preparing for disasters



Natural disasters can happen at any time. To protect yourself during disasters, it is important to be prepared before they happen.

(1) What you should always have ready

- Drinking water (for 7 days)
- Food (for 7 days)
- Batteries
- Small flashlight

(2) What you need when evacuating

Put in a backpack (or a bag to keep your hands free) all the items you need when evacuating.

Make sure that the bag is not too heavy to carry by yourself.

- Residence card and passport
- Cash
- Underwear
- Socks
- Gloves
- Radio
- Rain gear
- First aid kit
- Mobile phone (and batteries)
- Plastic bags
- Ready-to-eat food
- Masks
- Medical thermometer
- What you personally need
(such as medications, contact lenses, glasses, sanitary products)

Motomiya City lends “Disaster Prevention Radios” to its citizens. It is free of charge.

It broadcasts Motomiya City information and disaster information every day.

During a disaster, listen carefully to radio broadcasts.

For more
information







Disaster Prevention Measures Division,
Citizens' Affairs Department
on 1F of Motomiya City Hall

☎ 0243-24-5365

1-5 Tips for when evacuating

How to collect necessary information

When a disaster occurs, it is important to gather accurate information and stay calm.

TV NHK Data Broadcasting (The “d” button on the remote)	Radio FM Mot.com (77.7 MHz)
Website  Motomiya City  NHK World Japan	SNS  Motomiya City official LINE  Motomiya City official Facebook
Application Safety Tips (Smartphone application that provides information on earthquakes and heavy rain)	 For iOS  For Android

Earthquake Early Warning

It provides an advance alert for big earthquakes. You will be notified with a loud sound from cell phones, smart phones, and disaster prevention administrative radios (Motomiya City Disaster Prevention Radios) in the case of an earthquake. When you hear the sound, take action to protect your head and body, such as hiding under a desk.

Evacuation shelters

Evacuation shelters are places to gather when protecting yourself from disasters or your home has been destroyed by disasters. You will be living with people who live in the same district. Observe the rules and regulations of the evacuation shelters. Shelters can be used by anyone. They are free of charge. Find the locations of evacuation shelters on the Motomiya City website, on the TV by pressing the “d” button on the remote, or via the Motomiya City Disaster Prevention Radio.

For more information : Disaster Prevention Measures Division,
Citizens' Affairs Department
on 1F of Motomiya City Hall ☎ 0243-24-5365

2 Administrative Contacts and Consultations

2-1 Administrative contacts

In Japan, you need to go to the municipal office where you live when you change your place of residence or start living in a different area. There are three municipal offices in Motomiya City. Please consult with us about any questions or problems in daily life.

(1) Motomiya City Hall

☎ Matters on resident registration, taxes, garbage, water, kindergartens, nurseries and schools

📍 212 Motomiya Bansei,
Motomiya-shi
☎ 0243-33-1111
🕒 Open: 8:30 to 17:15
from Monday to Friday



Map



(2) Epoca

☎ Matters on infants, childcare, welfare and health

📍 60-1 Motomiya Chiyoda,
Motomiya-shi
☎ 0243-63-2780
🕒 Open: 8:30 to 17:15
from Monday to Friday



Map



(3) Shirasawa General Branch Office

☎ City hall administrative services available (limited) in Shirasawa District

📍 494-22 Shiraiwa Tsutsumisaki,
Motomiya-shi
☎ 0243-44-2111
🕒 Open: 8:30 to 17:15
from Monday to Friday



Map



If you are not sure which office to consult with, call Motomiya City Hall on ☎0243-33-1111.

2-2 Consultations

(1) International Relations Division at 2F of Motomiya City Hall

This division helps international residents living in Motomiya City.

📍 212 Motomiya Bansei, Motomiya-shi
☎ 0243-24-5303
🕒 Open: 8:30 to 17:15 from Monday to Friday

🌐 Supported languages

jpn eng

(2) Fukushima International Association (FIA)

• Consultation desk for international residents

Appointments are available for consultations on daily life matters. You can visit the FIA for in-person consultations, or seek advice over the phone, by email, or via LINE call.



📍 2-1 Funabacho, 2F at Fukushima Prefectural Government Office Funabacho Branch
☎ 024-524-1316
✉ ask@worldvillage.org
📱 LINE ID @901wdqzt
🕒 Open: 9:00 to 17:15 from Tuesday to Saturday



LINE



Map

🌐 Supported languages

jpn eng chi kor vie tai ind nep rus
ukr por spa tgl

(3) Professional consultation by telephone (FIA)

(1) Legal advice on marriage and divorce, inheritance, contracts and workplace issues

(2) Consultations regarding procedures for immigration, status of residence, and nationality

An application form must be submitted in advance to apply for a consultation. Availability for consultation will be determined once the FIA has received the application form. Consultation times are one hour for (1) and 30 minutes for (2). All appointments are free of charge. You can attend one consultation appointment between April and the following March.

☎ 024-524-1316
🕒 Open: 9:00 to 17:15 from Tuesday to Saturday

🌐 Supported languages

jpn eng chi kor por tgl

(4) Yoriso Hotline (Social Inclusion Support Centre)

You can receive consultation for any matter.

☎ 0120-279-338
Dial the number and press 2 when you hear the guidance.

🌐 Supported languages

eng chi kor vie tai ind nep por spa
tgl

3 Procedures Related to Daily Living

3-1 Hospitals

In Japan, there are two types of hospitals: general hospitals (large hospitals) and clinics or medical practitioners.

If you feel ill, go to a clinic or medical practitioner that is close to where you live.

Hospitals are closed on Sundays, national holidays, year-end and New Year holidays, and Obon holidays.

On holidays, go to a hospital on holiday duty. (Page 3)

Medical expenses are incurred when seeking medical advice at a hospital.

These expenses vary according to your age and income.

(1) Search for a hospital

First, find a hospital that is close to where you live. You can use this QR code to find a hospital in your area.



Fukushima Medical Information Net

(2) Go to the hospital

Take your “insurance card” with you to the hospital. In the hospital, fill in the “medical questionnaire” to provide information on your physical condition. For guidance on how to fill in the questionnaire, please use this QR code.



Multi-Language Medical Questionnaire

Types of hospitals

内科 Naika	Internal Medicine Colds and internal diseases
外科 Geka	Surgery Physical injury and surgery
小児科 Shonika	Pediatrics Illness of babies and children
整形外科 Seikeigeka	Orthopedic Surgery Bones, joints and muscles
眼科 Ganka	Ophthalmologist Problems with eyes
歯科 Shika	Dentist Problems with teeth
産婦人科 Sanfujinka	Obstetrics and Gynecology Problems related to the female reproductive system and pregnancy



3-2 Garbage

In Motomiya City, you need to separate garbage into the designated bags, and put it out on the correct day of the week. The city hall gives a set of garbage bags to new residents when you first move in. When putting out the garbage, please make sure to follow the three rules below:

- (1) Put out the garbage in the morning between 6 AM to 8 AM.
- (2) Put out the garbage at the designated area.
- (3) Separate the garbage properly and put them in the designated garbage bags.

You can buy garbage bags at supermarkets and drug stores in the city.

How to sort out the garbage

Put out combustible waste (1) on the days designated for combustible waste. Put out other garbage (2)–(9) on the days designated for non-combustible waste.

<p>(1) Combustible waste</p> <p>Yellow bag</p> 	<p>(2) Plastic wastes (which are not soiled)</p> <p>Transparent bags</p> 
<p>(3) Vinyl and plastic wastes (which are soiled)</p> <p>Light blue bags</p> 	<p>(4) Waste to be crushed (which contains metals)</p> <p>Pink bags</p> 

(5) Landfill waste (such as debris and glass)

Grey bags



The same bags are used for landfill waste and cloths/fabrics. Do not put landfill waste and cloths/fabrics together in one bag.

(6) Cloths/ fabrics

Grey bags



The same bags are used for landfill waste and cloths/fabrics. Do not put landfill waste and cloths/fabrics together in one bag.

(7) Bottles, empty cans and PET bottles



Rinse with water and put them in the designated box.

(8) Newspapers, magazines, corrugated cardboard and cartons



Tie items of the same type together with string so that they do not become loose.

(9) Dry-cell batteries

Put them in the dry-cell batteries collection bag that is prepared on the garbage collection day.



(10) Oversized garbage

Oversized garbage is garbage that is too big to be put in the designated garbage bag. They are not accepted at the garbage station that is close to where you live. They must be taken to Motomiya Clean Centre.

If you are unable to take the items to Motomiya Clean Centre yourself, please contact the city hall. You can ask for the items to be collected from your house. This is a paid service. The garbage will be collected on a specified date.

For more information

Social Affairs and Environment Division, Citizens' Affairs Department on 1F of Motomiya City Hall
☎ 0243-24-5362

Motomiya Clean Centre
📍 113 Motomiya Sakuta, Motomiya City ☎ 0243-33-5499



Map

3-3 Transportation (buses, trains, driver's licence, bicycles)

“Gakuto-kun and Mayumi-chan Line” (buses)

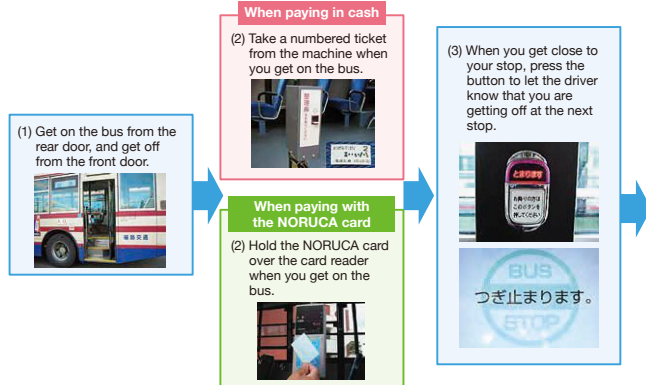
There is a bus route connecting Motomiya City and Koriyama City called the “Gakuto-kun and Mayumi-chan Line”. This bus travels to Koriyama Station from Motomiya City Hall. Buses run six round trips on weekdays, and four round trips on weekends and holidays. See the city website for the information on when and where the buses stop.



Website

The bus fare can be paid with cash or a NORUCA card. You can buy a NORUCA Card at Motomiya City Community Centre (MoCo Station). Charge money to this card to use it. See Page 27 for the location of MoCo Station.

How to ride the bus



Only coins can be used to pay the fare. No change will be given. Bills can be exchanged for coins using the machine next to the driver.

When paying in cash

- (4) For the bus fare, check the number on the bus display that is the same as your numbered ticket.



- (5) Put the money together with the numbered ticket into the payment box when you get off the bus.



When paying with the NORUCA card

- (4) For the bus fare, check the number on the bus display that is the same as when you boarded the bus.



- (5) Pass the NORUCA card over the card reader when you get off the bus.



For more information

Social Affairs and Environment Division,
Citizens' Affairs Department
on 1F of Motomiya City Hall

☎ 0243-24-5361

Motomiya City Community Bus

There is a bus service that runs through Motomiya City. You can get on and off the bus at any stops along its route.

How to get on/off the bus

- (1) To get on a bus, raise your hand to alert the driver.
(2) To request a stop, speak directly to the driver.
See the city website for information on bus timetables, stops and fares.



Website

For more information

Social Affairs and Environment Division,
Citizens' Affairs Department
on 1F of Motomiya City Hall

☎ 0243-24-5361

Trains

Within Motomiya City, there are two train stations; (1) Motomiya Station and (2) Gohyakugawa Station. See Page 27 for the location of the stations. Trains are bound for Fukushima or Koriyama areas. Please check the JR website for the timetable.



To ride the train, you need a ticket or an IC card (such as Suica card). You can buy a ticket at the station. You can buy an IC card from the ticket office (Midori-no-madoguchi). Please ask a member of staff at Motomiya Station.



JR Website

Driver's Licence

A foreign licence can be converted to a Japanese licence. You need to make an appointment in advance.

<p>(1) Fukushima Driver's Licence Centre</p> <p>📍 1-1, Machiniwasaka Ohara, Fukushima-shi</p> <p>☎ 024-591-4372</p>  <p>Map</p>	<p>(2) Koriyama Driver's Licence Centre</p> <p>📍 14-6 Bijoikegami, Otsukimachi, Koriyama-shi</p> <p>☎ 024-961-2100</p>  <p>Map</p>
--	---

Those who have a driver's licence of certain countries can apply for conversion at Koriyama Driver's Licence Centre. You can inquire over the phone to find out which countries' licences are applicable.

Bicycles

You have to register your bicycle for theft prevention at places where bicycles are sold or at a police station.

The bicycle theft prevention registration allows you to prove that the one you ride is your own bicycle.

See Page 2 for the location of police offices.

You also have to obtain bicycle liability insurance.

The insurance company will pay money if you injure or kill someone else in an accident.

3-4 Postal services

You can find post offices and postboxes using this QR code. See Japan Post's website for more details.



Post Map

Delivery notice

Sometimes you may not be able to receive a package or mail when no one is home.

In this case, a delivery notice will be left in your mailbox.

When you have a delivery notice, you can receive the package or mail by either of two methods:

(1) Apply for redelivery by phone, online or via the mobile application on the delivery notice.

(2) Go to the post office specified on the delivery notice to pick it up directly.

When you go to the post office, bring the delivery notice and your ID certificate (such as a Residence Card) with you.

More information can be found on the city website.

- Necessary procedures when moving to Motomiya City
- My Number (personal number)
- Registration of seal
- Pension
- Medical insurance
- Procedures that require a registration (marriage, divorce, childbirth, death)
- Taxes
- Electricity, gas, and water
- When looking for a house
- Banks
- Necessary procedures when moving out of Motomiya City



Website

4 Procedures Related to Children

4-1 Nursery school and kindergarten

There are nursery schools and kindergartens in Motomiya City. Children under the age of 6 can attend nursery schools, kindergartens, and certified child care centres.

Nursery schools

- They take care of children while their parents are working, for about 8 hours a day.
- Some nursery schools are open at night or on holidays. (Outside of Motomiya City)
- Apply at your desired nursery school to enrol your child.



Map

Category	Name of nursery school	Address and telephone number	Minimum age for enrolment
Public	Mizuiro Nursery School	📍 77-1 Motomiya Shimodai ☎ 0243-34-5881	From Age 1
Public	Takagi Nursery School	📍 80-1 Takagi Daigaku ☎ 0243-33-5131	From 6 months after birth
Public	Mayumi Nursery School	📍 12-1 Motomiya Sorimachi ☎ 0243-33-1611	From 6 months after birth
Public	Gohyakugawa Kindergarten and Nursery Centre (Regional Childrearing Support Centre)	📍 23-1 Arai Yamanokami ☎ 0243-33-4370	From 6 months after birth
Public	Shirasawa Nursery School	📍 211 Nukazawa Gomiuchi ☎ 0243-44-3117	From 6 months after birth
Private	Motomiya Yoji-no-le Nursery School	📍 42-60 Niita Masugata ☎ 0243-34-3640	From 6 months after birth
Private	Komyo Nursery School	📍 66-4 Arai Minaminouchi ☎ 0243-34-5888	From 6 months after birth
Private	Donguri Nursery School	📍 14-5 Motomiya Obata ☎ 0243-33-5905	From 6 months after birth

Kindergartens

- Kindergartens are educational facilities that allow children to experience group living.
- They are open to children from the age of 3 until they enter elementary school.
- Children are cared for for about 4 hours a day.
- Apply at your desired kindergarten to enrol your child.



Map

Category	Name of kindergarten	Address and telephone number	Minimum age for enrolment
Public	Gohyakugawa Kindergarten and Nursery Centre	📍 23-1 Arai Yamanokami ☎ 0243-33-4370	From Age 4
Public	Iwane Kindergarten	📍 92-1 Iwane Shimotoshigami ☎ 0243-39-2109	From Age 4
Public	Wada Kindergarten	📍 3 Wada Gakkomae ☎ 0243-44-3115	From Age 4
Public	Nukazawa Kindergarten	📍 23 Nukazawa Hara ☎ 0243-44-3116	From Age 4
Public	Shiraiwa Kindergarten	📍 166 Shiraiwa Baba ☎ 0243-44-2216	From Age 4
Private	Motomiya Kindergarten	📍 2 Motomiya Higashimachi ☎ 0243-33-1855	From Age 3

For more information

**Kindergartens, Nurseries and Schools Division,
Education Department
on 2F of Motomiya City Hall**

☎ 0243-24-5446

4-2 Elementary school and junior high school

In Japan, parents with children between the ages of 6 and 15 send their children to school.

Children go to elementary school from the age of 6 to 12, and to junior high school from 12 to 15.

International residents must apply at the City Hall if they wish to send their children to elementary or junior high school.

Elementary schools in Motomiya City

Name of school	Location	Telephone number
Motomiya Elementary School	📍48 Motomiya Tatenokoshi	☎0243-33-2044
Motomiya Mayumi Elementary School	📍1 Motomiya Butai	☎0243-63-2205
Gohyakugawa Elementary School	📍1-1 Arai Nishihata	☎0243-33-2461
Iwane Elementary School	📍12 Iwane Shimotoshigami	☎0243-39-2010
Nukazawa Elementary School	📍23 Nukazawa Hara	☎0243-44-2006
Wada Elementary School	📍1 Wada Gakkomae	☎0243-44-2219
Shiraiwa Elementary School	📍193-1 Shiraiwa Baba	☎0243-44-2005



Map

Junior High Schools in Motomiya City

Name of school	Location	Telephone number
Motomiya Daiichi Junior High School	📍15 Motomiya Kankane	☎0243-33-2249
Motomiya Daini Junior High School	📍28 Arai Dangomori	☎0243-33-3235
Shirasawa Junior High School	📍835 Shiraiwa Yanagiuchi	☎0243-44-2009



Map

Elementary school and junior high school placements are determined by where you live.

Tuition and textbooks are free of charge.

School lunches are provided.

You have to pay the school lunch fee every month.

For more information

**Kindergartens, Nurseries and Schools Division,
Education Department
on 2F of Motomiya City Hall**

☎0243-24-5445

More information can be found on the city website.

- When getting pregnant
- When giving birth
- When graduating from junior high school



Website

5 Medical and Welfare Related Procedures

Available to read on the city website.

- Long-term care insurance
- Disabilities
- Public livelihood assistance (quasi-needy households)



Website

6 Other Information for International Residents

Available to read on the city website.

- Japanese language classes
- Websites for learning Japanese



Website

Facilities in the City

In Motomiya City, there are public facilities such as community centres and gymnasiums that anybody can use. Various exhibitions, events and classes are held at these facilities. For details on when and how to use the facilities, please ask the staff.

Cultural facilities

Map



1 Central Community Centre

☎ Community events
📍 39-1 Motomiya Yarai, Motomiya-shi
☎ 0243-24-1930

2 Sunrise Motomiya

☎ Concerts and events
📍 39-4 Motomiya Yarai, Motomiya-shi
☎ 0243-33-2611



3 Shirasawa Community Centre

☎ Community events
📍 500 Shiraiwa Tsutsumisaki, Motomiya-shi
☎ 0243-44-2350



4 Motomiya City Museum of History and Culture

☎ Exhibitions about Motomiya's history and culture
📍 272-7 Wada Ushigadaira, Motomiya-shi
☎ 0243-33-2611



5 Shirasawa Fureai Cultural Hall

☎ Art, history and culture exhibitions
📍 494-44 Shiraiwa Tsutsumisaki, Motomiya-shi
☎ 0243-44-3185

Library

Map



6 Central Community Centre Library

☞ Book loans, events

📍 39-1 Motomiya Yarai, Motomiya-shi

☎ 0243-24-1932



7 Shirasawa Yume Library

☞ Book loans, events

📍 500 Shiraiwa Tsutsumisaki, Motomiya-shi

☎ 0243-44-2112

Sports Facilities

Map



8 Motomiya Sports Park (general gymnasium, tennis courts, and Minna-no-Harappa Sports Ground Running Course)

☞ Exercise facilities

📍 1 Takagi Kurosaku, Motomiya-shi

☎ 0243-34-2131



9 Mayumi Arena

☞ Exercise facility

📍 5-1 Sekishita Higashihara, Motomiya-shi

☎ 0243-33-2611



10 Shirasawa Gymnasium

☞ Exercise facility

📍 318-1 Shiraiwa Tsutsumisaki, Motomiya-shi

☎ 0243-44-2350



11 Shirasawa Green Park (Baseball park, football ground)

☞ Exercise facilities

📍 61 Nukazawa Ishigami, Motomiya-shi

☎ 0243-44-4555



12 Public Swimming Pool

☞ Swimming facility

📍 36 Motomiya Butai, Motomiya-shi

☎ 0243-34-3003



13 Shirasawa B&G Marine Centre

☞ Swimming facility

📍 318-1 Shiraiwa Tsutsumisaki, Motomiya-shi

☎ 0243-44-3318



14 Community Square Park Golf Ground

☞ Golfing facility

📍 Takagi Nagase, Motomiya-shi

☎ 0243-33-2611

Tourist Facilities

Map



15 Mizuiro Park

☞ Children's play areas

📍 27-10 Motomiya Baba, Motomiya-shi

☎ 0243-24-5406



16 Hana-to-Rekishi-no-Sato Janohana

☞ Seasonal flowers

📍 38 Motomiya Janohana, Motomiya-shi

☎ 0243-34-2036



17 Shiki-no-Sato Ryokusuien

☞ Seasonal flowers

📍 208-1 Iwane Kawahara, Motomiya-shi

📍 71 Horinouchi Akatsumae, Kikutamachi, Koriyama-shi

☎ 024-959-6764



18 Prince William's Park

(English Garden, indoor playground,
Kinenju-no-mori outdoor playground)

☞ Children's play areas

📍 50 Nukazawa Ishigami, Motomiya-shi

☎ 0243-44-2500 (Indoor playground)

☎ 0243-24-5406 (outdoor playground)



19 Iwatsunosan Gankakuji Temple

☞ A temple surrounded by beautiful nature that offers Zazen experience

📍 84 Higashiyaguchi Wada, Motomiya-shi

☎ 0243-44-3354



20 Takamatsuyama Kannonji Temple

☞ A temple that offers Zazen experience

📍 27 Nukazawa Takamatsu, Motomiya-shi

☎ 0243-44-3822

Other facilities

Map



21 Motomiya Station

☞ Train Station

📍 Motomiya Kunawa, Motomiya-shi



22 Gohyakugawa Station

☞ Train Station

📍 Arai Shinsuke, Motomiya-shi



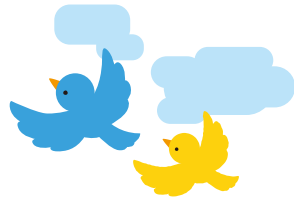
23 Motomiya City Community Centre (MoCo Station)

☞ Public shared space

📍 19-1 Motomiya Kunawa, Motomiya-shi

☎ 0243-33-6688

Facilities in the City



Ageo City,
Saitama Prefecture
(sister city)
Official Mascot
APPY



Motomiya City Official Mascot
Mayumi-chan

Ageo City x
Motomiya City
Friendship Character
Ayumi



**Information site
for international residents
of Motomiya City**

<https://www.city.motomiya.lg.jp/site/global-en>

